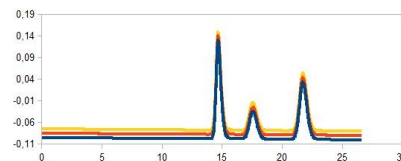
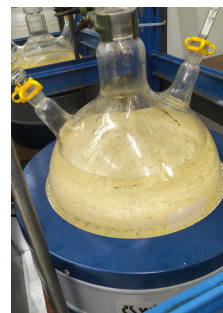
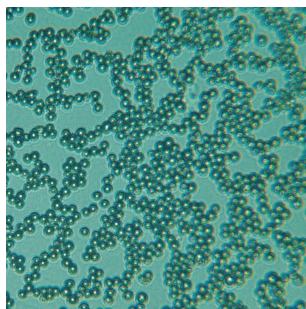


GPC / SEC / HPLC Columns

Made by AppliChrom GmbH



AppliChrom CatPhil-P / CatPhil-P-JLJ

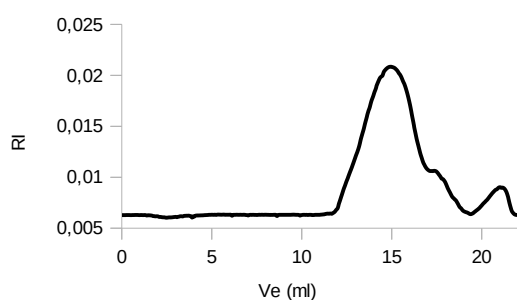


AppliChrom CatPhil-P

Special GPC / SEC columns for the aqueous analysis of neutral, anionic and additionally cationic polymers.

For GPC / SEC analysis of

- Polycations, polyammonium compounds
- polyamines (chitosans), polyethylenimines,
- PEGylated polyethyleneimines
- polysaccharides
- polyanions (heparins, pectins, ...)

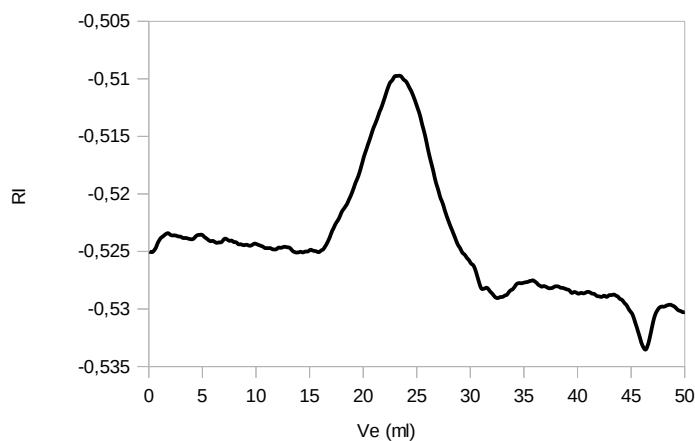


Analyte: Poly DADMAC

Polydiallyldimethylammonium chloride, polyquaternium-6, Mw = 100-200 000Da, CAS [26062-79-3]

Column: AppliChrom CatPhil-P-100
AppliChrom CatPhil-P-350

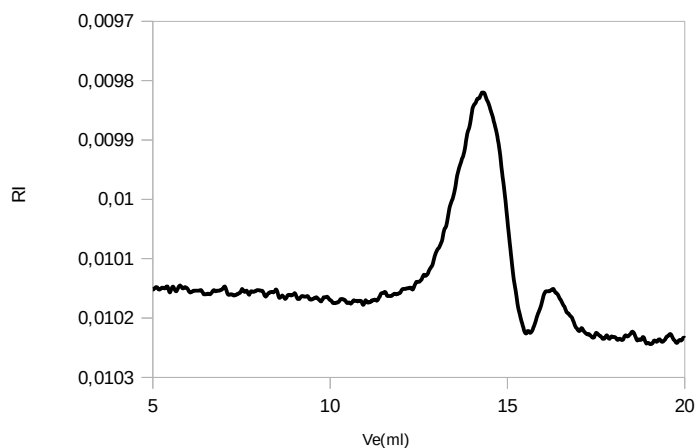
Dimension: e.a. 300mm x 8mm
Mobil Phase: NaNO_3 + 0.2% formic acid in H_2O
Flow: 1.0ml/min
Temperature: 20°C
Detection: RI
Injection: 100µl sample



Analyte: High molecular weight chitosan, poliglusam, polyglucosamine, CAS [9012-76-4]

Column: AppliChrom CatPhil-P-400

Dimension: 3x 300mm x 8mm
Mobil Phase: NaNO_3 + 0.2% formic acid in H_2O
Flow: 1.0ml/min
Temperature: 20°C
Detection: RI
Injection: 100µl sample



Analyte: Chitosan sulfate

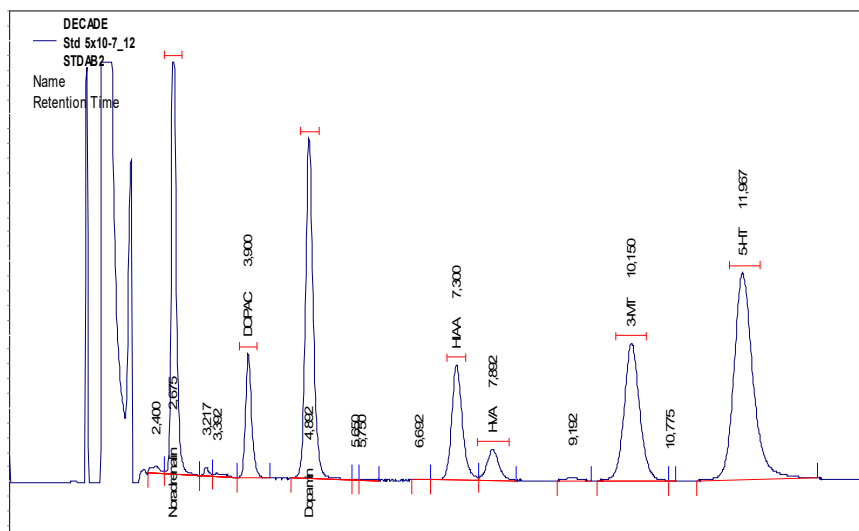
Column: AppliChrom CatPhil-P-100
AppliChrom CatPhil-P-350

Dimension: e.a. 300mm x 8mm
Mobil Phase: $0.05\text{MNa}_2\text{HPO}_4$ + 0.1M NaNO_3 in H_2O
Flow: 1.0ml/min
Temperature: 20°C
Detection: RI
Injection: 100µl sample

For aqueous polycations including

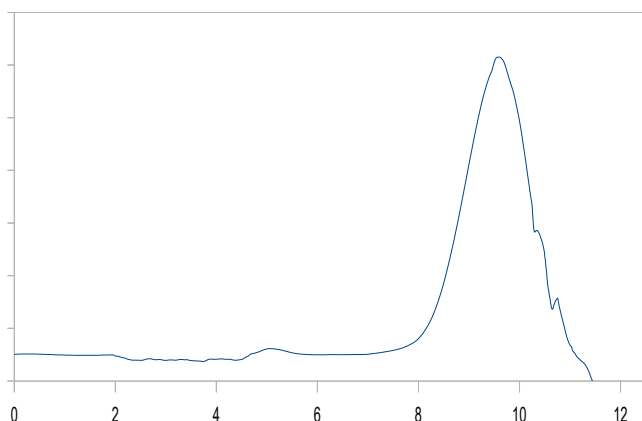
AppliChrom CatPhil-P

Catalog #	Description	Dimension	Separation Range
SACP1002508 SACP1003008 SACP100508 SACP100308	AppliChrom CatPhil-P-100	250mm x 8mm 300mm x 8mm 50mm x 8mm 30mm x 8mm	100Da-2 500Da
SACP2002508 SACP2003008 SACP200508 SACP200308	AppliChrom CatPhil-P-200	250mm x 8mm 300mm x 8mm 50mm x 8mm 30mm x 8mm	100Da-20 000Da
SACP3502508 SACP3503008 SACP350508 SACP350308	AppliChrom CatPhil-P-350	250mm x 8mm 300mm x 8mm 50mm x 8mm 30mm x 8mm	2 500Da-1 000 000Da
SACP4002508 SACP4003008 SACP400508 SACP400308	AppliChrom CatPhil-P-400	250mm x 8mm 300mm x 8mm 50mm x 8mm 30mm x 8mm	10 000Da-5 000 000Da



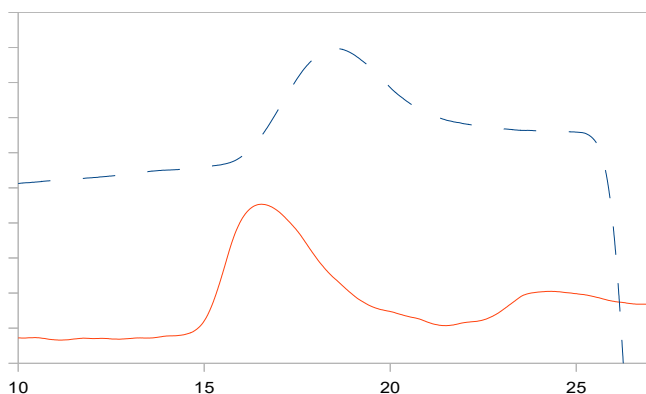
AppliChrom® CatPhil-P-JLJ series - additionally enhanced hydrophilicity

Special GPC / SEC columns for the aqueous analysis of neutral, anionic and additionally cationic polymers - JLJ series with further increased hydrophilicity for extended application range - also in pure aqueous eluents (calibration with dextran / pullulan and new: additionally with PEO / PEG or p-2-vinylpyridine possible).



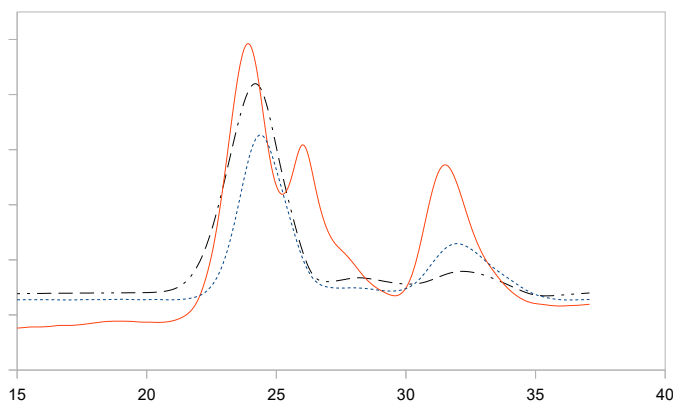
Analyte: Poly(2-vinylpyridine)
CAS [25014-15-7], Mw = 40 000Da

Column: AppliChrom CatPhil-P-350-JLJ
Dimension: 300mm x 8mm
Mobil Phase: 0.1M NaCl + 0.2% TFA in H₂O,
Flow: 1.0ml/min
Temperature: 20°C
Detection: RI
Injection: 20µl sample



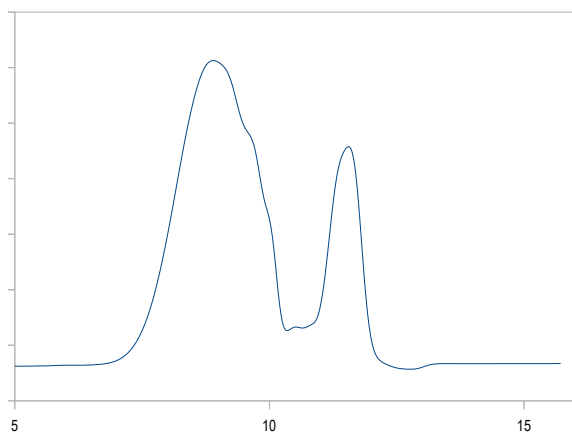
Analyte: Polyquaternium-33
very high molecular weight, copolymer of trimethylaminoethyl acrylate salt and acrylamide, CAS [69418-26-4] (red) vs. high molecular weight polyacrylamide, CAS [9003-05-8] 15Mio Da (blue, dashed)

Column: AppliChrom CatPhil-P-100-JLJ
AppliChrom CatPhil-P-350-JLJ
AppliChrom CatPhil-P-500-JLJ
Dimension: e.a. 300mm x 8mm
Mobil Phase: 0.1M NaCl + 0.2% TFA in H₂O,
Flow: 1.0ml/min
Temperature: 40°C
Detection: RI
Injection: 100µl sample



Analyte: Poly DADMAC
Polydiallyldimethylammonium chloride, polyquaternium-6
Mw = 100-200kDa, CAS [26062-79-3]

Column: AppliChrom CatPhil-P-100-JLJ
AppliChrom CatPhil-P-350-JLJ
AppliChrom CatPhil-P-500-JLJ
Dimension: e.a. 300mm x 8mm
Mobil Phase: 0.1M NaCl + 0.2% TFA in H₂O,
Flow: 1.0ml/min
Temperature: 40°C
Detection: RI
Injection: 100µl sample

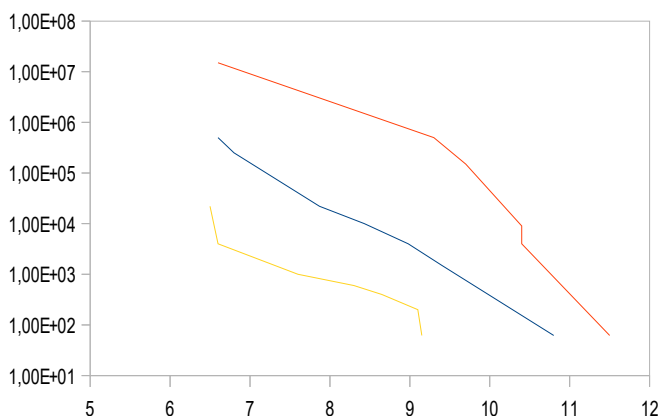


Analyte: Poly(vinylimidazole)
CAS [25232-42-2]

Column: AppliChrom CatPhil-P-350-JLJ

Dimension: 300mm x 8mm
Mobil Phase: 0.1M NaCl + 0.2% TFA in H₂O
Flow: 1.0ml/min
Temperature: 20°C
Detection: RI
Injection: 20µl sample

AppliChrom CatPhil-P-JLJ Calibration curve
Porosity P-100, P-200, P-350 and P400,
based on dextrans



Analyte: PEO
Dextran
Polyacrylamide

Column: AppliChrom CatPhil-P-100-JLJ
AppliChrom CatPhil-P-350-JLJ
AppliChrom CatPhil-P-500-JLJ

Dimension: e.a. 300mm x 8mm
Mobil Phase: H₂O
Flow: 1.0ml/min
Temperature: 20°C
Detection: RI
Injection: 100µl sample

AppliChrom CatPhil-P-JLJ

Catalog #	Description	Dimension	Separation Range
SACP100JLJ2508 SACP100JLJ3008 SACP100JLJ508 SACP100JLJ308	AppliChrom CatPhil-P-100-JLJ	250mm x 8mm 300mm x 8mm 50mm x 8mm 30mm x 8mm	100Da-2 500Da
SACP350JLJ2508 SACP350JLJ3008 SACP350JLJ508 SACP350JLJ308	AppliChrom CatPhil-P-350-JLJ	250mm x 8mm 300mm x 8mm 50mm x 8mm 30mm x 8mm	2 500Da-1 000 000Da
SACP500JLJ2508 SACP500JLJ3008 SACP500JLJ508 SACP500JLJ308	AppliChrom CatPhil-P-500-JLJ	250mm x 8mm 300mm x 8mm 50mm x 8mm 30mm x 8mm	10 000Da- ~50 000 000Da

A general guarantee for the functionality with all analytes can not be given. In individual cases it is always advisable to discuss the issue with our product specialists. An application laboratory in Oranienburg is also available for your service. Please contact us.

Errors and changes excepted. Products for research and development. Not tested for clinical, diagnostic or food applications.

Inquiry Form For Forwarding to AppliChrom GmbH

To place an order please fill in this form and send it by mail or fax to:

AppliChrom GmbH
Germendorfer Allee 20
D-16515 Oranienburg
Germany

Telephone: +49 (0)3301 579293
Fax: +49 (0)3301 209879
Email: info@applichrom.co
Web: www.applichrom.com

Catalog	Description	Dimension

bulk quantities on request

address

name

company / institute

address

country

telephone number

e-mail

VAT-number

comment

